



# One for all



LITTLE  
GREEN  
HOUSE<sup>®</sup>

We build and operate  
your childcare centre



# Little Green House Almost Home

We operate successful childcare centres in the French- and German-speaking parts of Switzerland. Flexibility and partnership, multilingualism, and a love for nature are the building blocks of our concept.

We are an owner-operated company at home in Switzerland and, at heart and mind, just as international as our surroundings.

# Childcare all-inclusive

Welcome to our all-inclusive package. You need a childcare facility, we handle everything else. We build and operate your childcare centre on a site that you allocate. Modern, sustainable, high-quality, and ready for use. Your one-stop childcare service.



## What does this mean for you?

We handle planning, construction, and operations of the childcare centre. You avoid investment, operating expenses, and worry.

## This is how it works:

You allocate a site or building plot and reserve a number of childcare places at Little Green House. This can be just a portion of our childcare capacity or all available places, depending on your need. That's it. We will take care of the rest.

## The Rest?

In collaboration with ERNE AG Holzbau, our building partner, we build a childcare facility on the site that you have allocated. Architecture and design of the centre are rooted in the concept developed by Little Green House.

The materials, the design and dimensions, colours, lighting, and acoustics, all work together to stimulate the children's senses. ERNE AG Holzbau's modular timber construction allows for buildings that are flexible, adapted to the respective site conditions, and quick to build. We implement your childcare project efficiently: in eight to ten months from building permits to welcoming the first children at the centre. With our modular building technique, we can create something grand even on small plots. Our building partner provides their know-how, supports us in the planning process, and builds the Little Green House facility tailored to your requirements for site and space.

When the construction is completed, Little Green House will operate the childcare centre following its well-proven concepts. In addition to taking care of the children, Little Green House will assume all administrative and operational tasks and will bear the economic and operational risk.



# Building Bricks



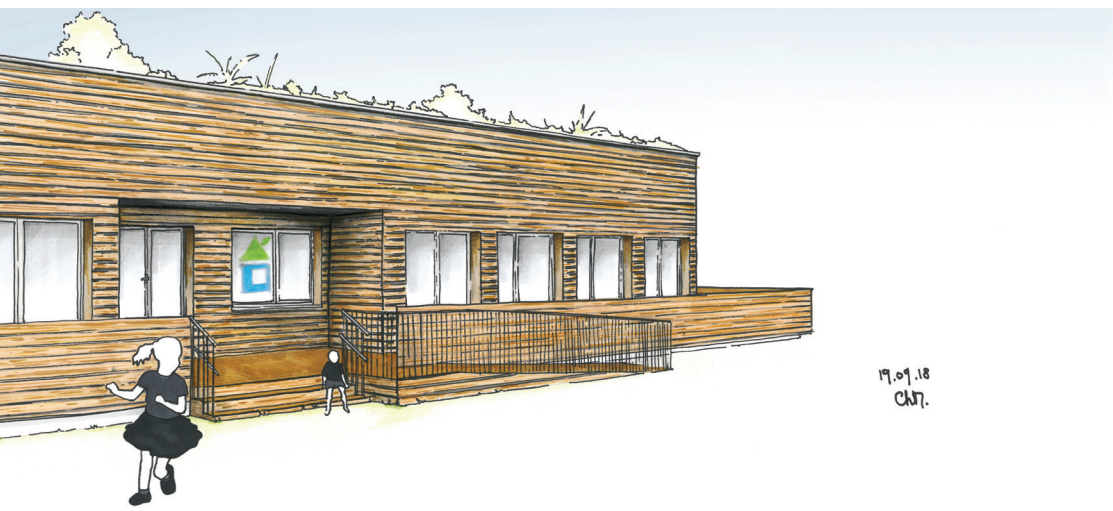
**Our smart building concept: Flexible. Modular. Intelligent use of space and surface.**

We deliver our childcare centres ready-to-use. Respect for the environment and flexibility are essential elements of our building approach. Our houses are easy to assemble, to adapt and to extend, thanks to their modular design and the high level of prefabrication. As such, they can also be a good option for temporary gaps between buildings, as they can easily be relocated when the plot is to be used otherwise.

We work primarily with natural materials like wood and attach particular importance to energy efficiency (Minergie standards) and sustainability.

And the highlight: our garden can be grown on the rooftop. This maximises usable space and allows for generous gardens even in space-limited plots or city centres. Our garden roofs are a real head-turner and an attractive complement to the look of the building.

Our smart concept marries tailored and stimulating childcare with optimal use of inner and outer space.



# Checklist: childcare “all inclusive”

## Quality of the planning process

- Ease: development, planning, and construction from a single source.
- Efficiency: optimal use of available land, including small plots and gaps between buildings.
- Ecology and sustainability: eco-friendly selection of materials, timber construction, energy efficiency (Minergie).
- Quick implementation: opening of the childcare centre eight to ten months after receipt of construction permit



## Quality of configuration, architecture and design

- Appealing, modular design. Flexible configuration and use. Easy to assemble (and disassemble/relocate, if necessary).
- Child-friendly atmosphere. Natural materials stimulate the children's senses.
- Attractive exterior design. Timber construction. Potential roof-top garden provides for a direct link to nature on site and space to romp about even on small plots. Easy to maintain planting.

## Quality of childcare

- Childcare based on the well-proven Little Green House concept:
  - Flexible and reliable support for working parents and their children (Partner to Parents).
  - Focus on nature, sustainability, and health (Woods & Wellbeing).
  - Growing up with multiple languages in playful language immersion (Living Languages).
- Care for children from crèche to kindergarten, in age-homogenous groups.
- Integrative rooms permit spaces for many purposes: multi-functional rooms and shared space complement each group's "private" rooms, and create places for communication and Little Green House events.



# A bit about us

While planning and construction are essential, our primary concern is, of course, the children and their families. The concept of the Little Green House childcare centres is based on three pillars:

# Woods & Wellbeing

## **Growing up healthily and in harmony with nature**

Our gardens are a vital element of our concept. In our gardens, the children romp about and create their own little beds, which they weed and eventually harvest. This way, we live the rhythm of the seasons, strengthen our immune system, and playfully adopt a caring approach to the environment.

All our childcare centres, in cooperation with ERNE, offer the option for a rooftop garden, ensuring a link to nature also on small plots.





# Living Languages

**At Little Green House we playfully and naturally accommodate the languages that are part of our environment.**

Little Green House is a place where all languages and all cultures are welcome. We believe that natural ease at hearing, speaking and understanding foreign languages opens up valuable opportunities for children to view the world. Interacting with others in a multicultural setting gives children a resilient spirit and reinforces their power of observation.

Our method - language immersion: We immerse ourselves and the children in the languages that surround us. This means that in our groups French-, English-, and German-speaking childcare educators accompany the children throughout the day. We play, explain, narrate and sing in the native language of our educators so that our children become familiarised with foreign sounds and speech melodies.

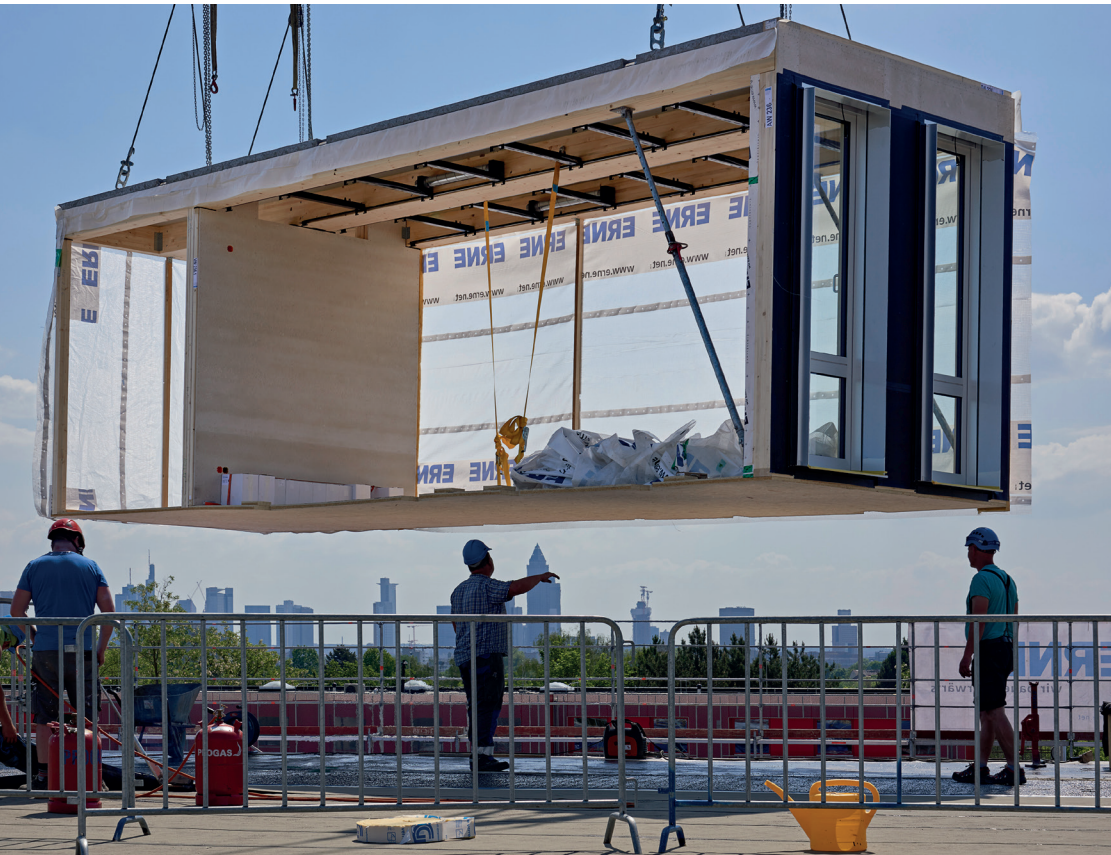


# Partner to Parents

## **Peace of mind for tall and small**

At Little Green House, we know that parents are increasingly under pressure to respond flexibly to changing requirements. We want to support parents as much as possible to reconcile their family life with their career. Therefore, our opening hours are geared to the requirements of working parents. We endeavour to give parents the peace of mind they need to concentrate on their job, assured that their little one feels safe and is having a good time at Little Green House.

To allow families to organise family and work life in a manner that best suits their needs, Little Green House is open Monday through Friday from 7h00 to 18h30. When requirements are outside the regular schedule, we can arrange an “on demand” schedule. The daycare is open year round and closed only on official bank holidays and two weeks around Christmas and New Year’s.



# Our partner: ERNE AG Holzbau

**ERNE AG Holzbau is our partner in planning and construction of the ready-to-use childcare centres. They support us with their know-how and building resources.**

Just like Little Green House, ERNE AG is an owner-operated Swiss enterprise and a leader in timber construction. Creative and innovative, ERNE AG provides building solutions for system, modular, hybrid and light-gauge steel construction and integral window and facade systems. ERNE AG is also known for high-end interior work, traditional joinery, and an extensive after sales service for new construction and restoration projects.

[www.erne.net](http://www.erne.net)

# Questions ?

How can we help you?  
We look forward to discussing your project.



Barbara Lax

Founding Director

[barbara@littlegreenhouse.ch](mailto:barbara@littlegreenhouse.ch)

+41 78 897 65 95



[www.littlegreenhouse.ch](http://www.littlegreenhouse.ch)

ERNE AG Holzbau, Laufenburg

Photos: Simone Bossi, Corinne Cuendet, Michael Frank, Bernhard Strauss.

DESIGN: [www.graphisterie.ch](http://www.graphisterie.ch)